

**ANEXO I**  
**ESTOJOS PLÁSTICOS PARA ACONDICIONAMENTO DE**  
**MÍDIAS**



MA20 e MR20 - Fotos com sugestão de layout dos estojos para armazenamento de, pelo menos, 20 mídias, nos modelos MA20 e MR20 (as medidas máximas constam na imagem):

MA20	MR20
 <p>A clear plastic case (MA20) is shown open, revealing two rows of blue USB drives. Each drive has a white label with a QR code and the text '4GB' and 'Justiça Eleitoral'.</p>	 <p>A clear plastic case (MR20) is shown open, revealing two rows of red USB drives. Each drive has a white label with a QR code and the text '1GB' and 'Justiça Eleitoral'. The case is annotated with dimensions: 'Altura 4,5cm' (Height 4.5cm) at the top, 'Profundidade 20cm' (Depth 20cm) on the left side, and 'Largura 26cm' (Width 26cm) at the bottom.</p>



MR40 - Foto com sugestão de layout do estojo para armazenamento de, pelo menos, 40 mídias de resultado, no modelo MR40:





MA40 - Foto com um tipo de sugestão de layout do estojo para armazenamento de, pelo menos, 40 mídias de resultado, no modelo MA40:

MA40	MA40
	

MA40 - Foto com um segundo tipo de sugestão de layout do estojo para armazenamento de, pelo menos, 40 mídias de resultado, no modelo MA40:

MA40	MA40
	

Tipos de bordas a serem desenvolvidas para atender a necessidade do TRE/MS: **Borda com Chanfro 0,5 cm.**

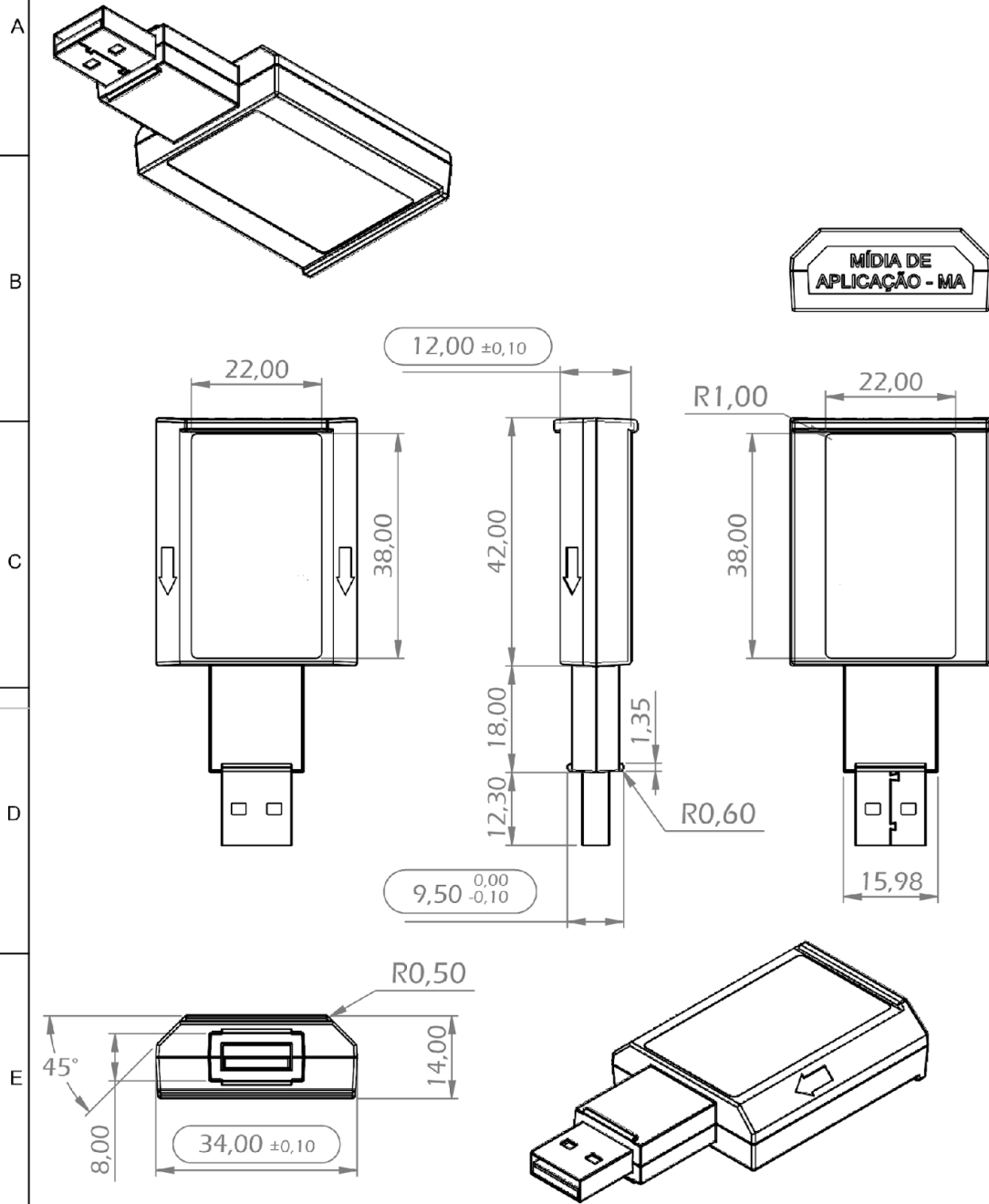
	
--	---





Tipos de bordas que o TRE/MS NÃO tem interesse: **Borda sem Chanfro.**



1	2	3	4
NO.	REV.	DESCRIPTION	DATE
1	10	UPDATED FOR UE2022 PROJECT	01/01/2022

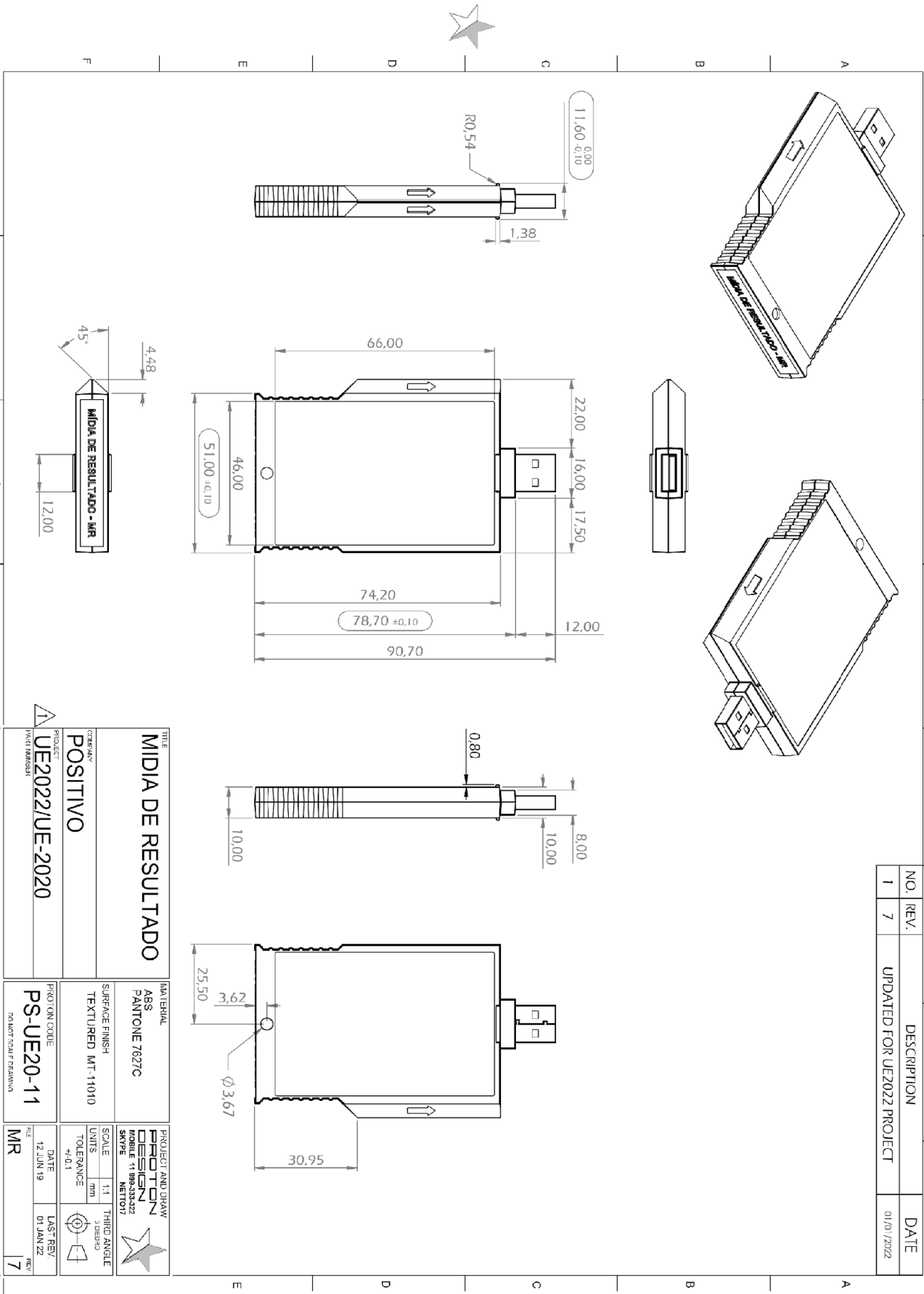


<div>TITLE</div> <div>MIDIA DE APLICAÇÃO</div>		<div>MATERIAL</div> <div>ABS</div> <div>PANTONE 7627C</div>		<div>PROJECT AND DRAW</div> <div>PROTON</div> <div>DESIGN</div> <div>MOBILE 11 999-333-322</div> <div>SKYPE NETTO17</div> <div></div>	
<div>COMPANY</div> <div>POSITIVO</div>		<div>SURFACE FINISH</div> <div>TEXTURED MT-11010</div>		<div>SCALE</div> <div>UNITS</div> <div>TOLERANCE</div> <div>+/-0.1</div>	<div>1:1</div> <div>mm</div> <div></div> <div>THIRD ANGLE</div> <div>3 DIEDRO</div>
<div>PROJECT</div> <div>UE2022/UE-2020</div>		<div>PROTON CODE</div> <div>PS-UE20-04</div> <div>DO NOT SCALE DRAWING</div>		<div>DATE</div> <div>27 MAI 19</div>	<div>LAST REV.</div> <div>01 JAN 22</div>
<div>PART NUMBER</div>		<div>FILE</div> <div>MA</div> <div>REV.</div> <div>10</div>			

WWW.PROTONDESIGN.COM.BR  
NETTO@PROTONDESIGN.COM.BR

**A4**

NO.	REV.	DESCRIPTION	DATE
1	7	UPDATED FOR UE2022 PROJECT	01/01/2022



TITLE		MATERIAL		PROJECT AND DRAW	
MIDIA DE RESULTADO		ABS PANTONE 7627C		PROTON DESIGN MOBILE 11 963422 NETTO17	
COMPANY		SURFACE FINISH		SCALE	
POSITIVO		TEXTURED MT-11010		1:1	
PROJECT		PROTON CODE		UNITS	
UE2022/UE-2020		PS-UE20-11		mm	
PRINT METHOD		DO NOT SCALE DRAWING		TOLERANCE	
				±0,1	
				DATE	
				12 JUN 19	
				LAST REV	
				01 JAN 22	
				REV	
				17	